



# Adventer Series

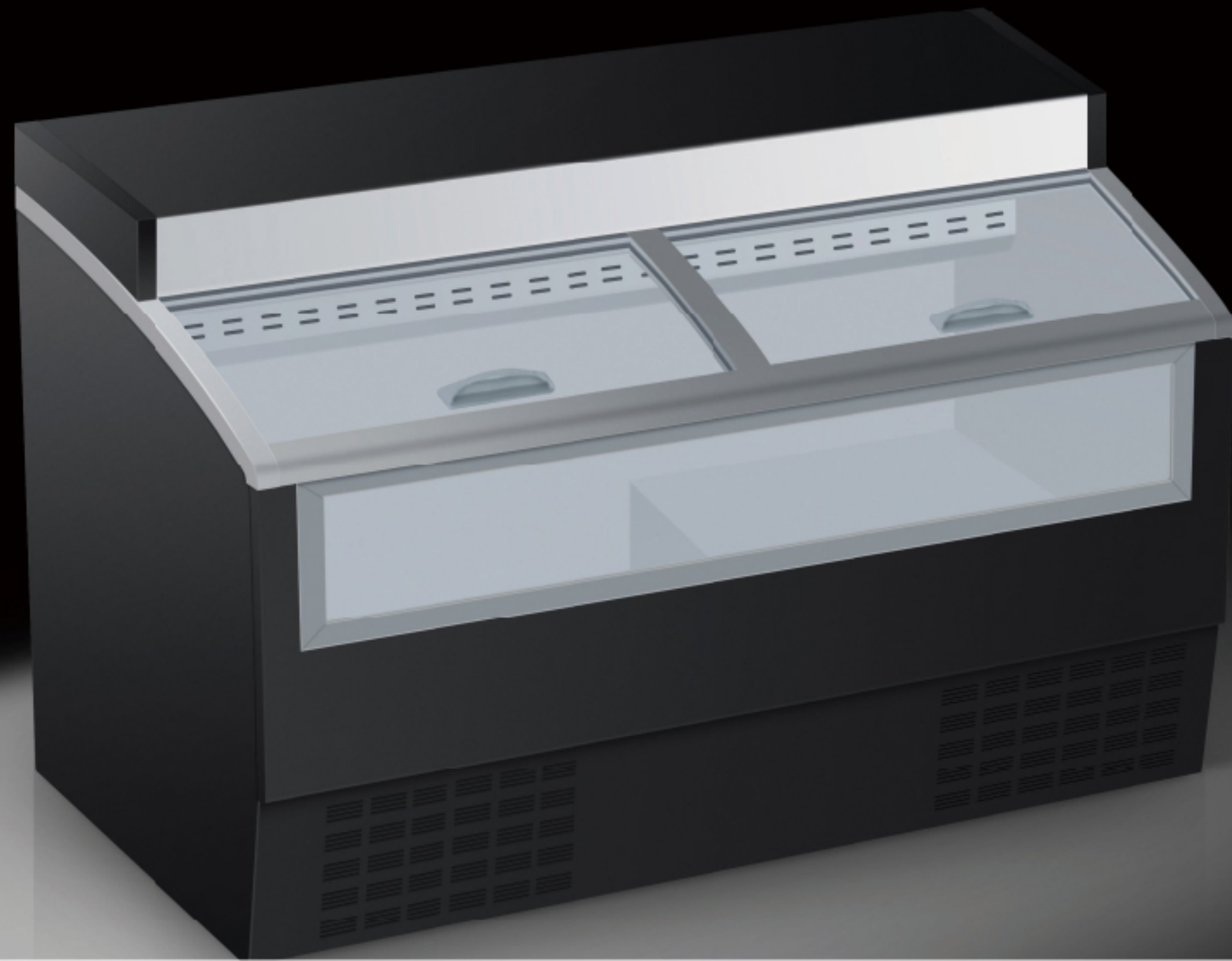
Ice Cream Freezer (Plug-in)

 **Excellent** Temperature Performance

 **+10%** Display Area

 **-20%** Energy Consumption

 **Give Attention to** Display and Storage



## Product Features

- Up-down sliding glass doors at both sides convenient for simultaneous shopping;
- Optional bearing platform at the top convenient for putting other promoted goods or acting as a compact showcase;
- Luxury front glass window for improving the display effect;
- Be adaptable to high ambient temperature such as suitable for a working condition of 32°C and 70% relative humidity in southern areas.

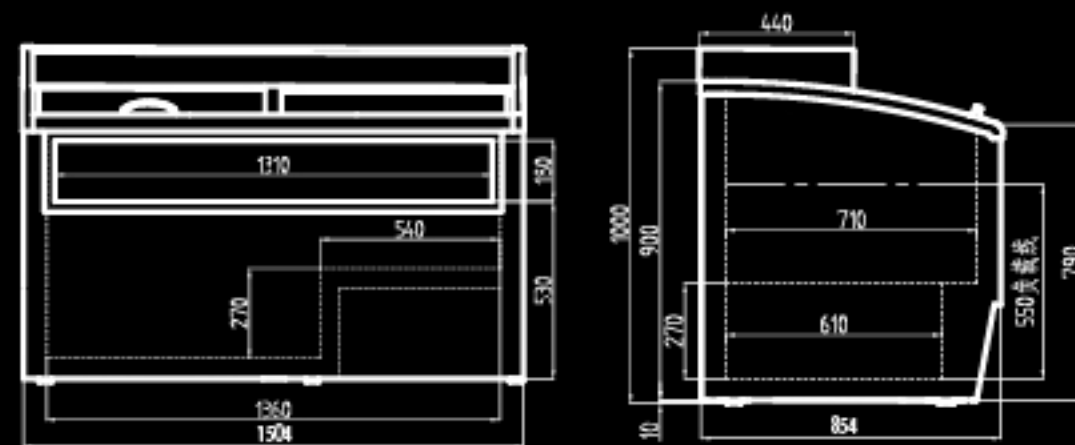
# Adventer Series

Ice Cream Freezer (Plug-in)



## Technical Data

Model	Dimensions/mm (L x W x H)	Refrigerant	Operating Temperature/°C	Environment Temperature / Relative Humidity /°C	Net Volume/m <sup>3</sup>	Display Area/m <sup>2</sup>	Net Weight/Kg
CIF15G	1504*854*1000	R404A	<-18	25° C/60% RH	0.41	0.97	120
CIF15H	1504*854*1000	R404A	<-18	32° C/60% RH	0.41	0.88	120



\*All measured value based on Carrier class and tests.